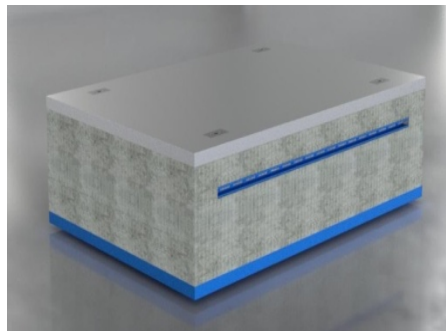
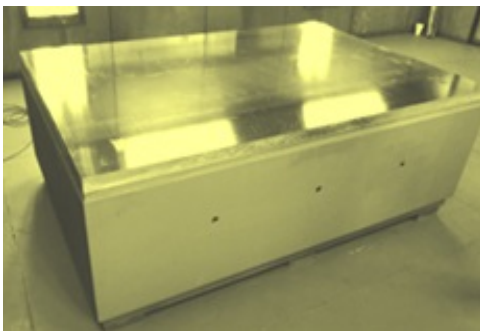
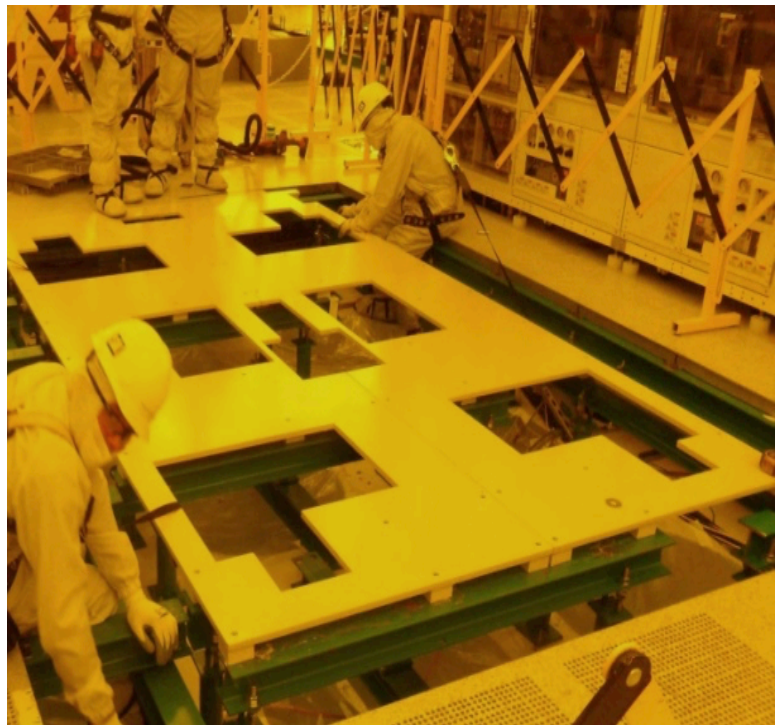


## SEMICONDUCTOR CLEANROOM METAL TOOL & HYBRID CONCRETE TOOL PEDESTALS

SEMICONDUCTOR TOOL PEDSTAL/PAD SYSTEM



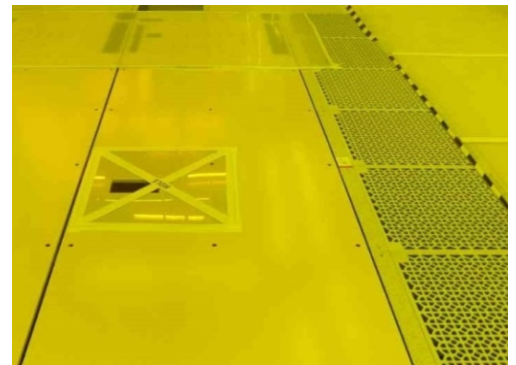
**Hybrid Metal & Concrete Tool Pedestal** for improved passive vibration isolation  
Optional **Solid Composite Vibration Isolation Plate**  
Improves vibration isolation / amplitude reduction / vibration regularization

**Client focused with a principal goal to meet or exceed our Client's expectations on each and every project.**

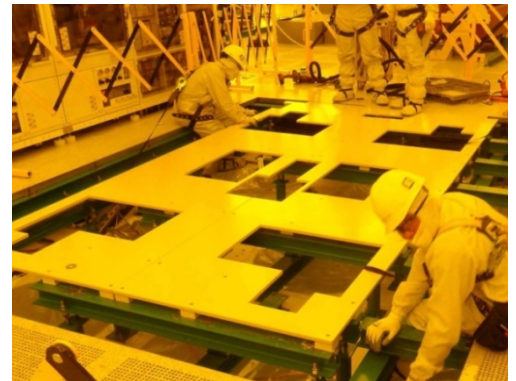
- ❖ Our Team is composed of Project Management, experienced Superintendents, highly trained Safety Officers, and Dedicated Foremen, as well as fabrication and installation Craftsmen.
- ❖ Fabrication of sub-floor structural members and turnkey installation of sub-floor and grating tiles for nearly 200,000sqft of new clean-room flooring assemblies

## ***METAL TOOL PEDESTAL***

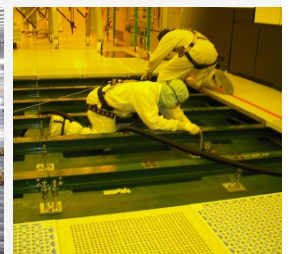
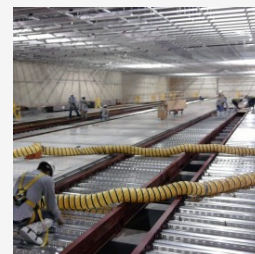
***Non-Adjustable  
Metal &  
Hybrid Metal  
Tool Pedestal  
Type***



***Adjustable Metal  
& Hybrid Metal  
Tool Pedestal  
Type***



**Experience  
&  
Knowledge**



**We have fabricated and installed over 1,000 tool pedestals / pads**

**Our In-house fabrication facility is capable of fabricating steel with the strictest tolerances.**

- ❖ Our highly trained fabrication team, installation crews and field supervisors strictly follow AISC Quality Management system (QMS) to ensure the delivery of highest quality products and customer satisfaction.
- ❖ Turnkey fabrication, installation and floor re-work of the following metal type tool pads:

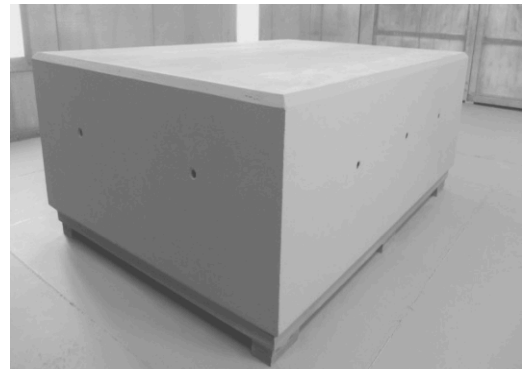
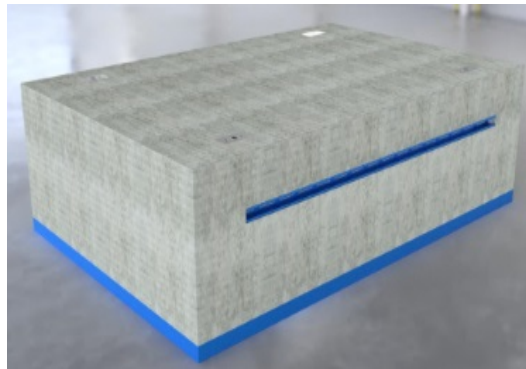
**Analysis/Lithography**

**Diffusion furnace/ Implant**

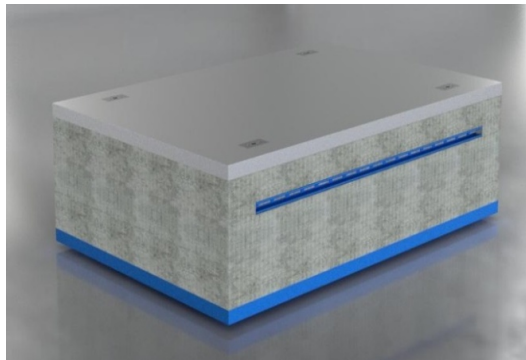
**Metals/Wets/ CMP**

## ***HYBRID CONCRETE TOOL PEDESTAL***

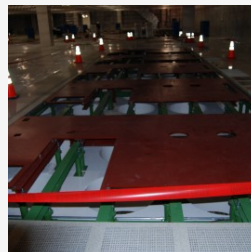
***Hybrid Concrete  
and  
Metal Tool  
Pedestal Type***



***Hybrid Concrete  
and  
Multiple Metal  
Tool Pedestal Type***



**Experience  
&  
Knowledge**



**We have fabricated and installed over 1,000 tool pedestals / pads**

Vibration Isolation Performance Varies Per Load



SK Commercial Construction Introduces the  
NxGeneration Tool Pedestal System  
For Additional Models & Configurations, please visit:  
[www.nxgeneration.com](http://www.nxgeneration.com).

**CONTACT**  
**Office: (254) 200-1170**  
[contact@nxgeneration.com](mailto:contact@nxgeneration.com)  
[www.nxgeneration.com](http://www.nxgeneration.com)

## ABOUT US

### SEMICONDUCTOR TOOL PEDESTAL/PAD SYSTEM

Client focused with the principal goal of meeting or exceeding our Client's expectations on each and every project.

Composed of Project Management, experienced Superintendents, highly trained Safety Officers, and dedicated Foremen, as well as fabrication Craftsmen.

Turnkey fabrication and CM Service of metal type tool pads and concrete type tool pads.

Our In-house fabrication facility performs to the strictest tolerances. The highly trained fabrication team follows the AISC Quality Management system (QMS) to ensure the delivery of highest quality products and 100% customer satisfaction.

#### **Previous Semiconductor Clients:**

Samsung Austin Semiconductor  
GlobalFoundries  
Novati Technologies  
Maxim Integrated

Our CM that has years of experience installing different type of tool pedestals ranging from photo tools, CMP tools, diffusion furnaces, metrology and cleans tools. We have employed QA/QC checklist that requires checks by multiple people throughout the tool pedestal / pad install process. On top of the quality work we have an even stricter safety plan in place. This plan is designed to keep staff and other clean room employees safe at all times. Our first priority in any install is keeping everyone safe and preventing any sort of impact to an operating FAB.



**Hybrid Metal & Concrete Tool Pedestal** for improved passive vibration isolation

#### **Solid Composite Vibration Isolation Plate**

Improves vibration isolation / amplitude reduction / vibration regularization